

COMMERCIAL GRIDDLE LINE



COMMERCIAL INDUCTION GRIDDLE

High-performance induction griddle equipment with one grilling zone. The housing is completely made from stainless steel shell and a cast iron plate or composite iron plate (2/3 smooth and 1/3 ribbed, or full-flat). Equipped with a thermostat with real-time temperature control technology, easy access front grease trough, and removable stainless steel griddle plate splash guard. All of these are the general features of the regular commercial induction griddle. The intelligent control panel's griddle brings you a different technical experience-one-touch cooking on the integrated control panel. The most highlight comes from 6 dish channels design to preset the frying temperature and time for different food.

COMMERCIAL GRIDDLE LINE



COUNTERTOP INDUCTION GRIDDLE

MODELS

LT-TPL-B135
LT-TPL-B105

MANUAL CONTROL MODELS

- Knob power control, from 0 level to 8 level (3500w/5000w)
- Push-button thermostat control, upper-limited grilling temperature set

APPLICATION

Cafes bar, bakery, food truck, traveling food stalls and fast food restaurant.

FEATURES

- Manually adjustable thermostat to prevent over grilling
- Shell body completely made from 304 stainless steel
- Cast iron or composite plates, available in 18mm (0.7") or 10mm (0.4") thick
- Removable stainless steel griddle plate splash guard
- Easy access front grease trough to excess oil-residue into
- Front stainless steel grease drawer, available on the left or right
- Sturdy stainless steel feet wrapped in rubber to prevent sliding
- Dual commercial, high-flow fans for extra durability
- Infineon IGBT Engine
- 95% energy efficiency
- CE approved
- One year parts warranty

DIGITAL CONTROL MODELS

- Power-on and heat-on indicator lamps
- Corresponding power level with LED display
- The fault code display with built-in protected controls
- The front thermostat controls with digital display
- Push button controls for easy cleaning

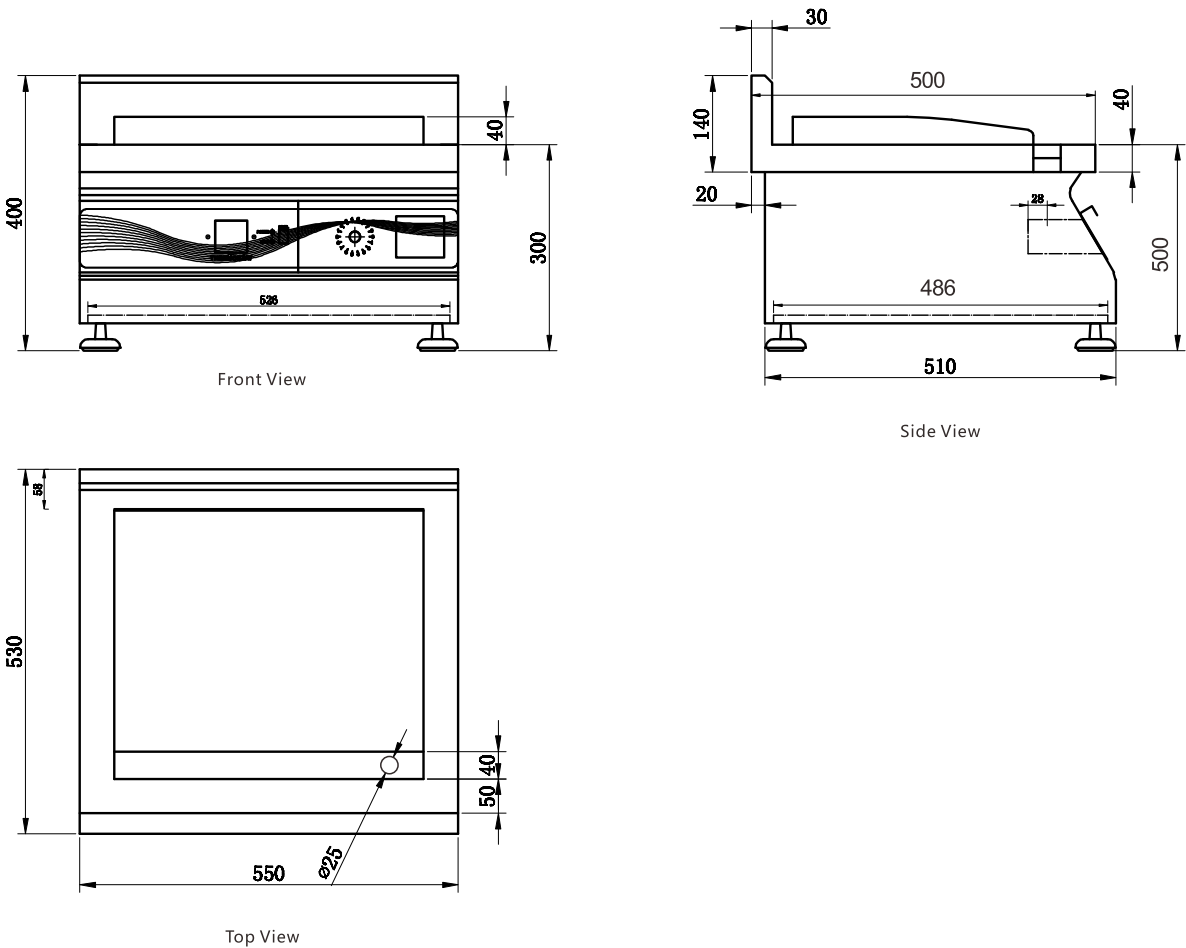
SAFETY FEATURES

- Over-heat protection
- High voltage protection
- Low voltage protection
- Overcurrent protection
- Dry burn protection

COMMERCIAL GRIDDLE LINE

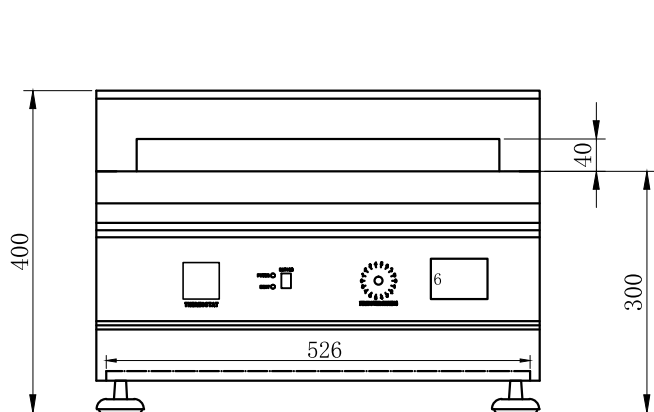
Model Item	Width	Depth	Height	Iron Plate Size	Heating Area
LT-TPL-B135	550	530	300+100	450*350*180	380*280
Electrical Connection: 3.5KW / 220V / 50Hz / Single Phase					
LT-TPL-B105	550	530	300+100	450*350*180	380*280
Electrical Connection: 5KW / 220V / 50Hz / Single Phase					

Countertop Induction Griddle: Full-flat Plate

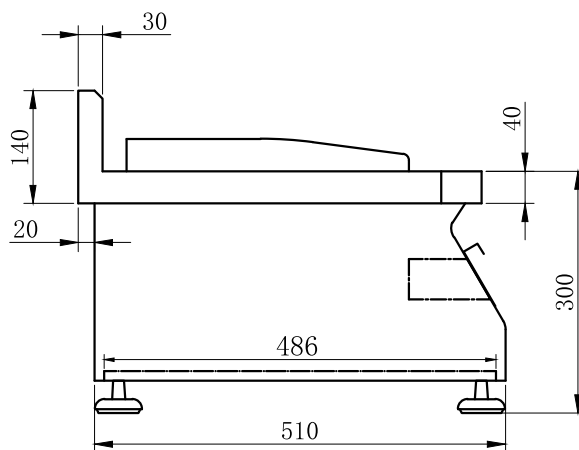


COMMERCIAL GRIDDLE LINE

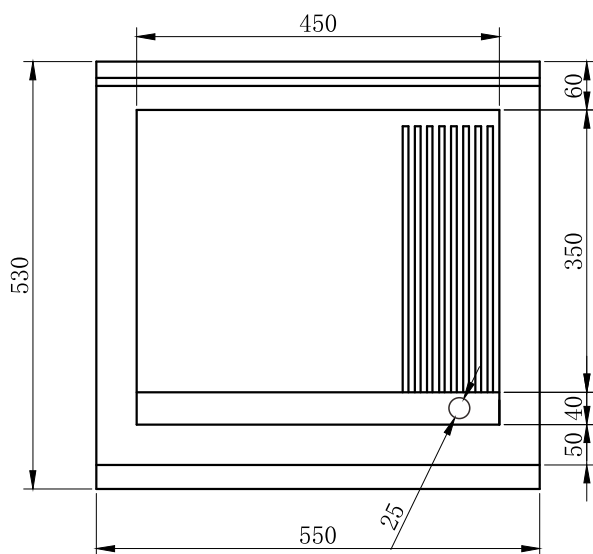
Countertop Induction Griddle: 2/3 smooth and 1/3 ribbed plate



Front View



Side View



Top View

COMMERCIAL GRIDDLE LINE



**COUNTERTOP INDUCTION
GRIDDLE 3.5KW/5KW**

MODELS

LT-TPL

MANUAL CONTROL MODELS

- Push-button power control(3500w/5000w)
- Push-button thermostat control, upper-limited grilling temperature set

APPLICATION

Cafes bar, bakery, food truck, traveling food stalls and fast food restaurant.

FEATURES

- Manually adjustable thermostat to prevent over grilling
- Casing body completely made from 304 stainless steel
- Cast iron or composite plates, available in 18mm (0.7") or 10mm (0.4") thick
- Removable stainless steel griddle plate splash guard
- Easy access front grease trough to excess oil-residue into
- Front stainless steel grease drawer, available on the left or right
- Sturdy stainless steel feet wrapped in rubber to prevent sliding
- Dual commercial, high-flow fans for extra durability
- Infineon IGBT Engine
- 95% energy efficiency
- CE approved
- One year parts warranty

DIGITAL CONTROL MODELS

- Power-on and heat-on indicator lamps
- Corresponding power level with LED display
- The fault code display with built-in protected controls
- The front thermostat controls with digital display
- Push button controls for easy cleaning

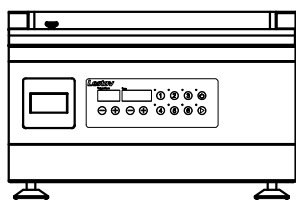
SAFETY FEATURES

- Over-heat protection
- High voltage protection
- Low voltage protection
- Overcurrent protection
- Dry burn protection

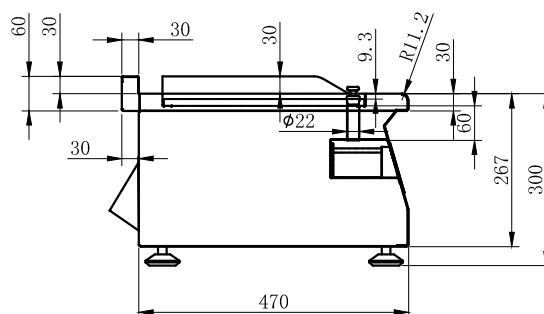
COMMERCIAL GRIDDLE LINE

Model Item	Width	depth	Height	Iron Plate Size	Grease Drawer Size
LT-TPL	500	500	320+30	390*300*20	140*240*240

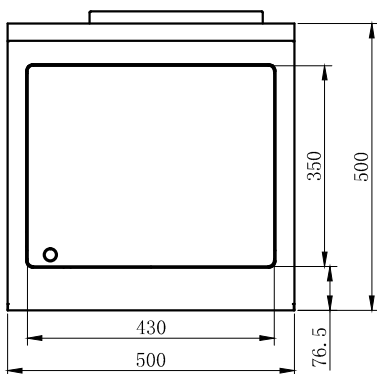
Electrical Connection: 3.5KW / 5KW / 200V-240V / 50Hz / Single Phase



Front View



Side View



Top View

COMMERCIAL GRIDDLE LINE



**FREESTANDING INDUCTION
GRIDDLE 8KW/10KW/12KW**

MODELS

LT-PL-E108
LT-PL-E110
LT-PL-E112

MANUAL CONTROL MODELS

- Knob power control, from 0 level to 8 level (8KW/10KW/12KW)
- Push-button thermostat control, upper-limited grilling temperature set

APPLICATION

Cafes bar, bakery, food truck, traveling food stalls and fast food restaurant.

FEATURES

- Manually adjustable thermostat to prevent over grilling
- Casing body completely made from 304 stainless steel
- Cast iron or composite plates, available in 18mm (0.7") or 10mm (0.4") thick
- Removable stainless steel griddle plate splash guard
- Easy access front grease trough to excess oil-residue into
- Front stainless steel grease drawer, available on the left or right
- The adjustable feets, allowing you to customize the height of your commercial griddle to your operating habit
- Dual commercial, high-flow fans for extra durability
- Infineon IGBT Engine
- 95% energy efficiency
- CE approved
- One year parts warranty

DIGITAL CONTROL MODELS

- Power-on and heat-on indicator lamps
- Corresponding power level with LED display
- The fault code display with built-in protected controls
- The front thermostat controls with digital display
- Push button controls for easy cleaning

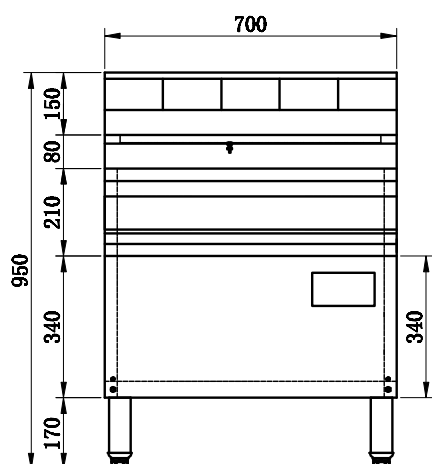
SAFETY FEATURES

- Over-heat protection
- High voltage protection
- Low voltage protection
- Overcurrent protection
- Dry burn protection

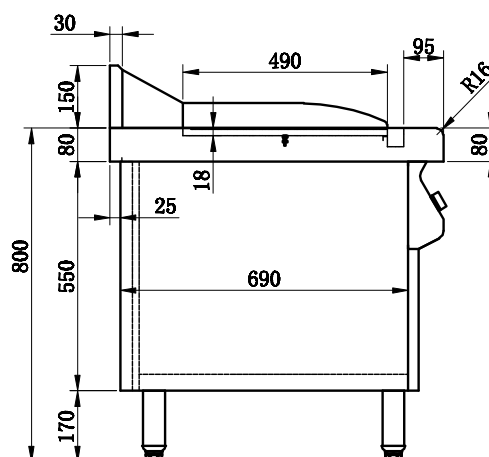
COMMERCIAL GRIDDLE LINE

Model Item	Width	depth	Height	Iron Plate Size	Grease Drawer Size
LT-PL-E108/110/112	700	800	800+150	600*500*20	140*240*240

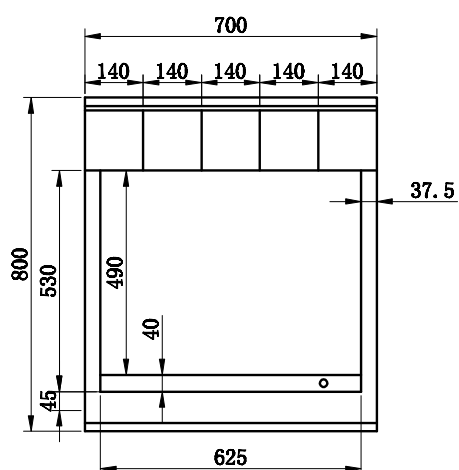
Electrical Connection: 8KW / 10KW / 12KW / 340V-460V / 3 Phases



Front View



Side View



Top View

COMMERCIAL GRIDDLE LINE



**FREESTANDING INDUCTION
GRIDDLE 8KW**

MODELS

LT-PL-F208

MANUAL CONTROL MODELS

- Push-button power control (8KW/10KW/12KW)
- Push-button thermostat control, upper-limited grilling temperature set

APPLICATION

Cafes bar, bakery, food truck, traveling food stalls and fast food restaurant.

FEATURES

- Manually adjustable thermostat to prevent over grilling
- Casing body completely made from 304 stainless steel
- Cast iron or composite plates, available in 18mm (0.7") or 10mm (0.4") thick
- Removable stainless steel griddle plate splash guard
- Easy access front grease trough to excess oil-residue into
- Front stainless steel grease drawer, available on the left or right
- The adjustable feet, allowing you to customize the height of your commercial griddle to your operating habit
- Dual commercial, high-flow fans for extra durability
- Infineon IGBT Engine
- 95% energy efficiency
- CE approved
- One year parts warranty

DIGITAL CONTROL MODELS

- Power-on and heat-on indicator lamps
- Corresponding power level with LED display
- The fault code display with built-in protected controls
- The front thermostat controls with digital display
- Push button controls for easy cleaning

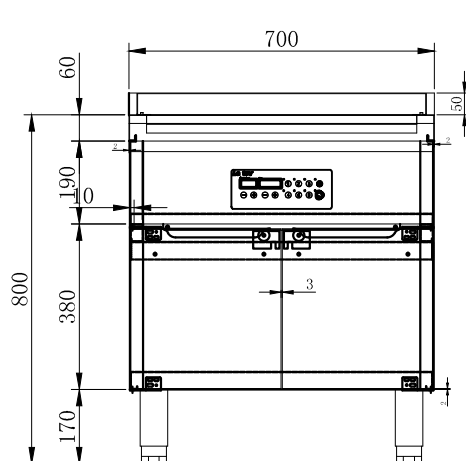
SAFETY FEATURES

- Over-heat protection
- High voltage protection
- Low voltage protection
- Overcurrent protection
- Dry burn protection

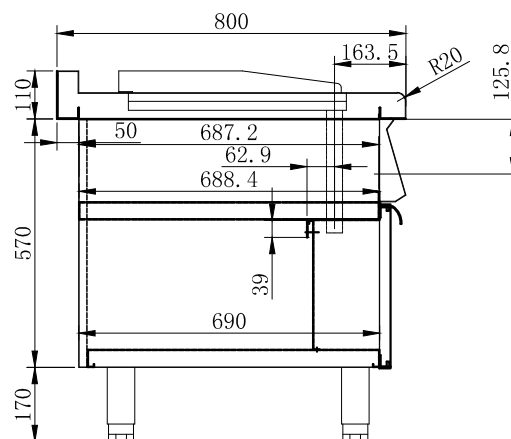
COMMERCIAL GRIDDLE LINE

Model Item	Width	depth	Height	Iron Plate Size	Grease Drawer Size
LT-PL-F208	700	800	800+50	600*500*18	140*240*240

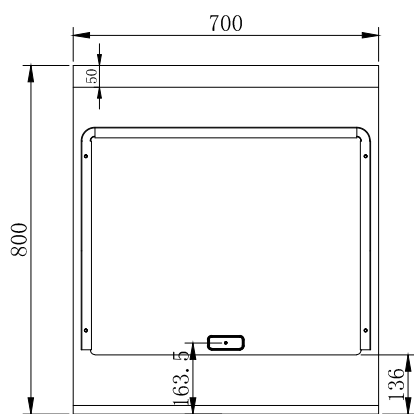
Electrical Connection: 8KW / 340V-460V / 3 Phases



Front View



Side View



Top View